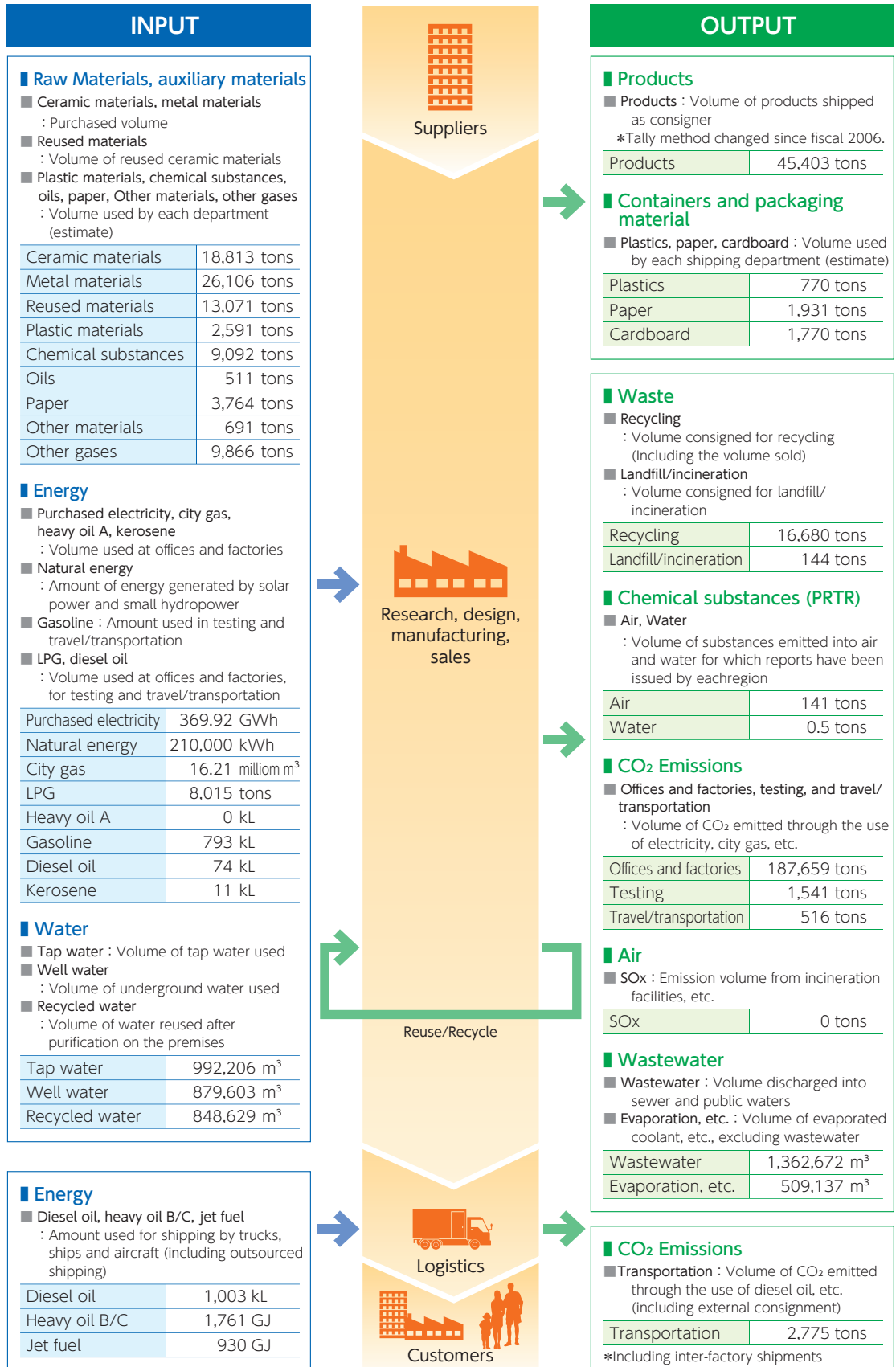


Environmental Burdens from Business Activities

Web
Material balance of domestic business sites

Material Balance

*Figures indicate performance of NGK Spark Plug Group (P29) and domestic business sites combined.



Factors used to calculate CO₂
Japan Auto Parts Industries Association (2001)

	CO ₂ conversion factor
Purchased electricity	0.33kg-CO ₂ /kWh
City gas	2.558kg-CO ₂ /m ³
LPG	3.007kg-CO ₂ /kg
Heavy oil A	2.712kg-CO ₂ /L

Ordinance guidelines on calculating greenhouse gas emission volumes resulting from business activities of designated emitters

	CO ₂ conversion factor
Gasoline	2.32kg-CO ₂ /L
Diesel oil	2.62kg-CO ₂ /L

Calculation of emission volume
For manufacturing sites with no equipment to measure wastewater volumes, the total volume of tap water and well water used is indicated as wastewater.