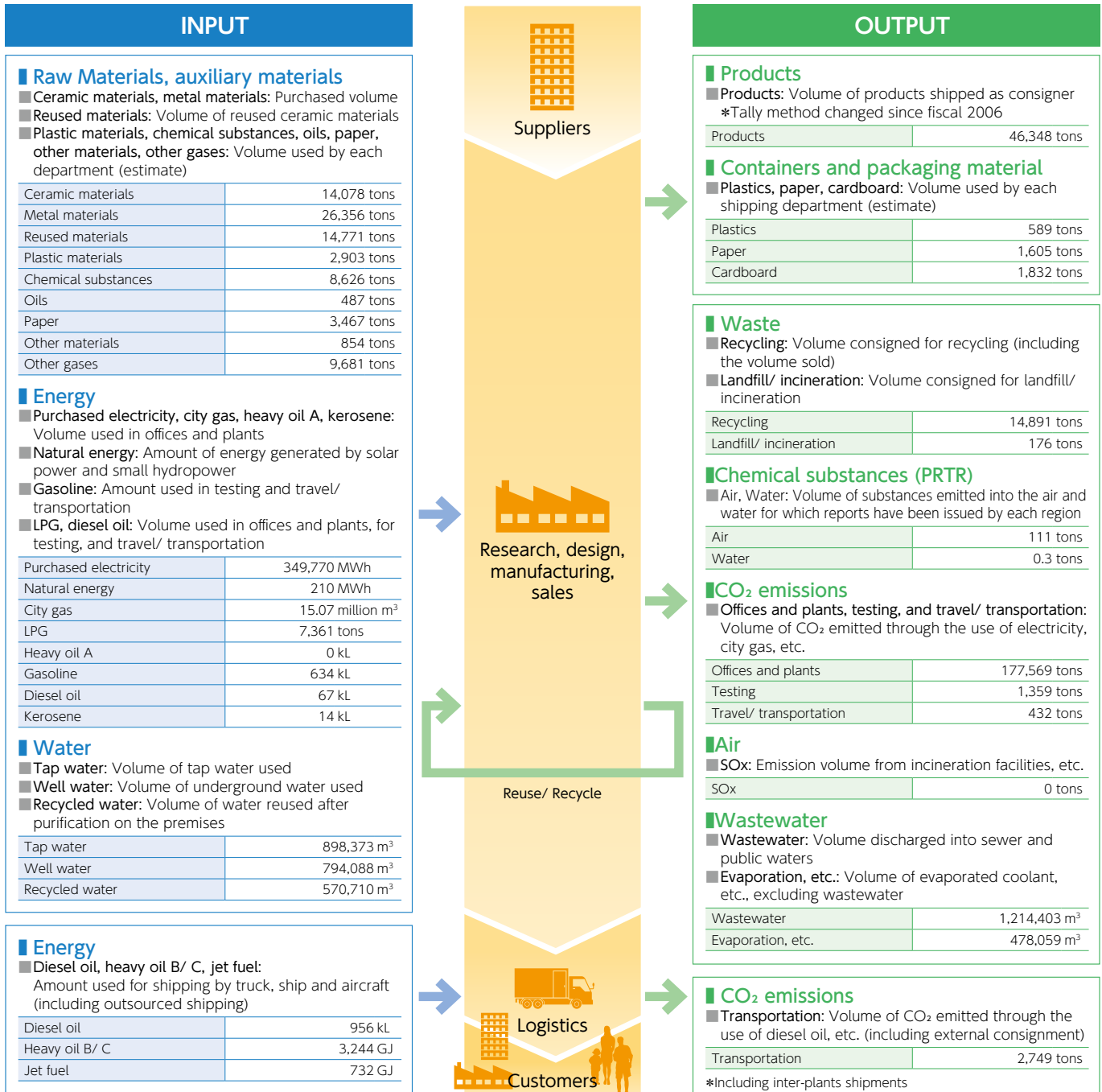


# Environmental Burdens from Business Activities

## Material Balance

\*Figures indicate performance of NGK SPARK PLUG Group (P33) and domestic sales offices sites combined.



### Factors used to calculate CO<sub>2</sub>

Japan Auto Parts Industries Association (2001)	
	CO <sub>2</sub> conversion factor
Purchased electricity	0.33kg CO <sub>2</sub> /kWh
City gas	2.558kg CO <sub>2</sub> /m <sup>3</sup>
LPG	3.007kg CO <sub>2</sub> /kg
Heavy oil A	2.712kg CO <sub>2</sub> /L
Kerosene	2.493kg CO <sub>2</sub> /L

Ordinance guidelines on calculating greenhouse gas emission volumes resulting from the business activities of designated emitters

	CO <sub>2</sub> conversion factor
Gasoline	2.32kg CO <sub>2</sub> /L
Diesel oil	2.62kg CO <sub>2</sub> /L

### Calculation of emission volume

For manufacturing sites with no equipment to measure wastewater volumes, the total volume of tap water and well water used is indicated as wastewater.