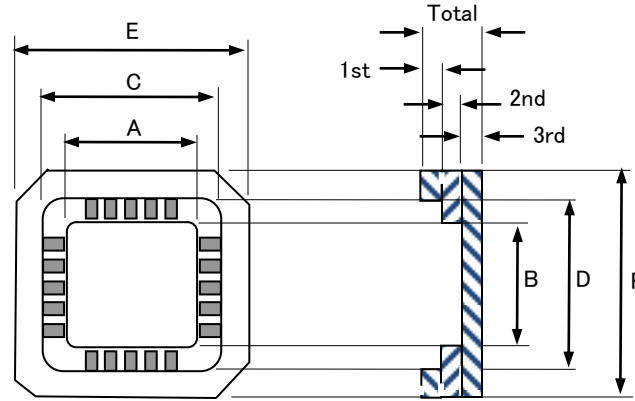
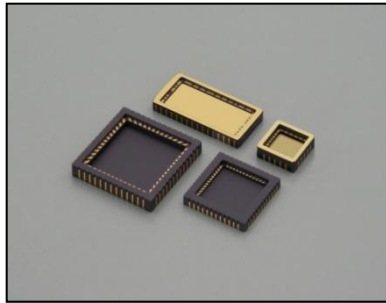


NTK CLCC (Ceramic – Leadless Chip Carrier)



UNIT: inch

LEAD COUNT	PKG TYPE	CAVITY						OVERALL			LAYER THICKNESS				NTK MATERIAL CODE B:Black W:White	CONNECTION (0:NON-Connect)		DRAWING NO.
		DIE CAV.			TOP CAV.						1st	2nd	3rd	TOTAL		SEAL RING	DIE ATTACH	
		A	X	B	C	X	D	E	X	F								
3	CLCC							0.105	X	0.080	0.020			0.020	B	-	-	IR - 6010A-MO
3	CLCC	0.070	X	0.050				0.120	X	0.100	0.020	0.020		0.040	B	D	SEE DRAWING	IR - 7816B-MO
3	CLCC	0.130	X	0.110				0.200	X	0.180	0.020	0.010		0.030	B	-	No.2	IR - 6409A-MO
4	CLCC							0.110	X	0.095	0.020			0.020	B	-	-	IR - 5960A-MO
4	CLCC	0.094	X	0.067				0.126	X	0.098	0.020	0.006		0.026	B	2, C	SEE DRAWING	IR - 8616A
4	CLCC	0.140	X	0.090				0.220	X	0.150	0.040	0.015		0.055	B	0	-	IR - 5933A
4	CLCC							0.240	X	0.180	0.020			0.020	B	-	SEE DRAWING	IR - 6190A-MO
4	CLCC	0.185	X	0.120				0.245	X	0.180	0.017	0.010		0.027	B	-	No.1	IR - 6362AA-MO
6	CLCC	0.100	X	0.090	0.175	X	0.100	0.245	X	0.170	0.030	0.010	0.020	0.060	B	0	No.3	IR - 5052D
6	CLCC	0.175	X	0.100				0.245	X	0.170	0.040	0.015		0.055	B	0	SEE DRAWING	IR - 5254D-MO
8	CLCC	0.175	X	0.100				0.245	X	0.170	0.039	0.020		0.059	B	0	SEE DRAWING	IR - 8573A-MO
12	CLCC	0.217	X	0.209	0.343	X	0.217	0.421	X	0.295	0.020	0.020	0.039	0.079	B	-	No.2	IR - 8423A-MO



NTK CLCC (Ceramic – Leadless Chip Carrier)

UNIT: inch

LEAD COUNT	PKG TYPE	CAVITY						OVERALL			LAYER THICKNESS				NTK MATERIAL CODE B:Black W:White	CONNECTION (0:NON-Connect)		DRAWING NO.	
		DIE CAV.			TOP CAV.						1st	2nd	3rd	TOTAL		SEAL RING	DIE ATTACH		
		A	X	B	C	X	D	E	X	F									
16	CLOC	0.120	×	0.120	0.160	×	0.160	0.250	×	0.250	0.020	0.020	0.015	0.055	B	0	0	IR - 5063F	
16	CLOC	0.130	×	0.130	0.180	×	0.180	0.250	×	0.250	0.025	0.040	0.040	0.105	B	No.8	0	IR - 6216A-MO	
18	CLOC	0.210	×	0.145	0.280	×	0.215	0.350	×	0.285	0.040	0.020	0.020	0.080	B	See DWG	No.1,2,15,16,17,18	IR - 5974A-MO	
18	CLOC	0.210	×	0.145	0.280	×	0.215	0.350	×	0.285	0.040	0.020	0.020	0.080	B	0	0	IR - 5999A-MO	
18	CLOC	0.239	×	0.174	0.281	×	0.216	0.350	×	0.285	0.015	0.020	0.015	0.050	B	0	No.18	IR - 5045B	
18	CLOC	0.240	×	0.175	0.280	×	0.215	0.350	×	0.285	0.020	0.025	0.020	0.065	B	0	0	IR - 5051DA	
18	CLOC	0.240	×	0.175	0.280	×	0.215	0.350	×	0.285	0.015	0.015	0.015	0.045	B	0	0	IR - 6500D-MO	
20	CLOC	0.160	×	0.160	0.240	×	0.240	0.350	×	0.350	0.020	0.020	0.020	0.060	B	0	0	IR - 5517BA	
20	CLOC	0.210	×	0.210	0.264	×	0.264	0.350	×	0.350	0.020	0.020	0.020	0.060	B	0	0	IR - 5705A	
20	CLOC	0.210	×	0.210	0.276	×	0.276	0.350	×	0.350	0.030	0.025	0.020	0.075	B	0	0	IR - 5856B-MO	
20	CLOC	0.240	×	0.240	0.280	×	0.280	0.350	×	0.350	0.040	0.030	0.025	0.095	B	0	-	IR - 6107A-MO	
20	CLOC	0.240	×	0.240	0.280	×	0.280	0.350	×	0.350	0.040	0.030	0.025	0.095	B	PAD A,B	PAD A,B	IR - 5259D	
24	CLOC		×			×		0.335	×	0.335	0.029			0.029	B	-	-	IR - 4161A-MO	
24	CLOC	0.185	×	0.185	0.245	×	0.245	0.335	×	0.335	0.015	0.030	0.015	0.060	B	0	0	IR - 8084A-MO	
28	CLOC	0.185	×	0.185	0.290	×	0.290	0.450	×	0.450	0.020	0.020	0.025	0.065	B	-	No.14	IR - 5778A-MO	
28	CLOC	0.250	×	0.250	0.330	×	0.330	0.450	×	0.450	0.020	0.025	0.020	0.065	B	0	0	IR - 5583AA	
28	CLOC	0.280	×	0.280	0.330	×	0.330	0.450	×	0.450	0.020	0.020	0.020	0.060	B	0	GND/No.14	IR - 338AA	
28	CLOC	0.290	×	0.290	0.366	×	0.366	0.450	×	0.450	0.020	0.020	0.020	0.060	B	0	SEE DRAWING	IR - 5939C-MO	
28	CLOC	0.300	×	0.300	0.356	×	0.356	0.450	×	0.450	0.010	0.030	0.020	0.060	B	0	0	IR - 220DA	
28	CLOC	0.310	×	0.310	0.366	×	0.366	0.450	×	0.450	0.020	0.020	0.020	0.060	B	0	0	IR - 247AAW	
28	CLOC	0.310	×	0.310	0.366	×	0.366	0.450	×	0.450	0.020	0.025	0.020	0.065	B	0	0	IR - 5451D	
28	CLOC	0.300	×	0.300	0.350	×	0.350	0.450	×	0.450	0.020	0.020	0.020	0.060	B	0	No.2,8,12,14,16,22,26,27	IR - 3014D	
28	CLOC	0.360	×	0.360		×		0.450	×	0.450	0.045	0.025		0.070	B	0	0	IR - 5929A-MO	
28	CLOC	0.510	×	0.275	0.570	×	0.330	0.720	×	0.400	0.020	0.025	0.035	0.080	B	0	GND PAD	IR - 5624C-MO	

NTK CLCC (Ceramic – Leadless Chip Carrier)

UNIT: inch

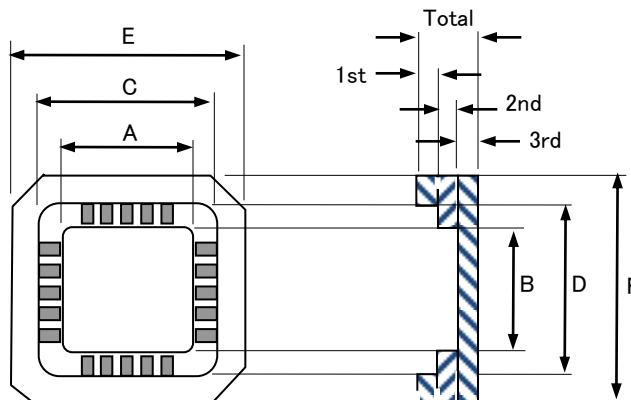
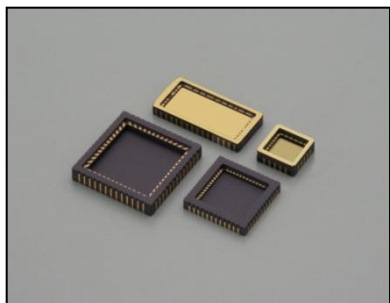
LEAD COUNT	PKG TYPE	CAVITY						OVERALL			LAYER THICKNESS				NTK MATERIAL CODE B:Black W:White	CONNECTION (0:NON-Connect)		DRAWING NO.	
		DIE CAV.			TOP CAV.						1st	2nd	3rd	TOTAL		SEAL RING	DIE ATTACH		
		A	X	B	C	X	D	E	X	F									
32	CLOC	0.208	×	0.164	0.440	×	0.350	0.550	×	0.450	0.020	0.020	0.030	0.070	B	0	DA PAD	IR - 6385C-MO	
32	CLOC	0.250	×	0.250	0.430	×	0.330	0.550	×	0.450	0.020	0.030	0.020	0.070	B	0	-	IR - 5654A-MO	
32	CLOC	0.260	×	0.230	0.360	×	0.330	0.550	×	0.450	0.015	0.020	0.020	0.055	B	0	0	IR - 5402AA	
32	CLOC	0.280	×	0.180	0.390	×	0.300	0.550	×	0.450	0.020	0.030	0.020	0.070	7	0	0	IR - 6077A	
32	CLOC	0.280	×	0.250	0.360	×	0.330	0.550	×	0.450	0.020	0.025	0.020	0.065	B	0	0	IR - 5116D	
32	CLOC	0.280	×	0.250	0.390	×	0.330	0.550	×	0.450	0.020	0.020	0.020	0.060	B	0	PAD A,B,C,D	IR - 5299B	
32	CLOC	0.350	×	0.250	0.430	×	0.330	0.550	×	0.450	0.020	0.030	0.020	0.070	B	0	0	IR - 5646B	
32	CLOC	0.350	×	0.300	0.450	×	0.350	0.548	×	0.448	0.020	0.020	0.025	0.065	B	-	No.16	IR - 5858A-MO	
32	CLOC	0.360	×	0.280	0.440	×	0.360	0.550	×	0.450	0.020	0.025	0.025	0.070	B	0	0	IR - 285F	
32	CLOC	0.390	×	0.290	0.450	×	0.350	0.550	×	0.450	0.025	0.020	0.020	0.065	B	0	0	IR - 5251E	
32	CLOC	0.390	×	0.290	0.450	×	0.350	0.550	×	0.450	0.020	0.030	0.020	0.070	B	0	PAD A,B	IR - 5535A-MO	
32	CLOC	0.410	×	0.310	0.465	×	0.365	0.550	×	0.450	0.020	0.030	0.020	0.070	B	0	0	IR - 5411BA	
32	CLOC	0.420	×	0.300	0.470	×	0.360	0.548	×	0.448	0.015	0.025	0.030	0.070	B	0	No.16	IR - 5753B-MO	
32	CLOC	0.430	×	0.320	0.470	×	0.365	0.550	×	0.450	0.015	0.015	0.040	0.070	B	0	DA PAD	IR - 6461A-MO	
32	CLOC	0.440	×	0.310	0.480	×	0.360	0.550	×	0.450	0.020	0.020	0.040	0.080	B	0	PAD A, B	IR - 5379C	
32	CLOC	0.680	×	0.290	0.730	×	0.340	0.829	×	0.400	0.020	0.020	0.040	0.080	B	0	No.16	IR - 5997A-MO	
36	CLOC	0.290	×	0.290	0.340	×	0.340	0.420	×	0.420	0.024	0.020	0.016	0.060	B	0	0	IR - 8145A-MO	
36	CLOC	0.290	×	0.290	0.340	×	0.340	0.420	×	0.420	0.024	0.020	0.016	0.060	B	-	-	IR - 6608A-MO	
36	CLOC	0.497	×	0.330	0.830	×	0.375	0.920	×	0.455	0.020	0.020	0.040	0.080	B	0	No.10, 28	IR - 6387A-MO	
40	CLOC	0.250	×	0.250	0.300	×	0.300	0.400	×	0.400	0.015	0.020	0.015	0.050	B	0	0	IR - 5338B	
40	CLOC	0.300	×	0.300	0.380	×	0.380	0.480	×	0.480	0.020	0.020	0.020	0.060	B	0	0	IR - 5913C-MO	
44	CLOC	0.250	×	0.250	0.390	×	0.390	0.650	×	0.650	0.020	0.020	0.020	0.060	B	0	0	IR - 288D	
44	CLOC	0.340	×	0.340	0.430	×	0.430	0.650	×	0.650	0.020	0.030	0.025	0.075	B	0	0	IR - 5969A	
44	CLOC	0.340	×	0.340	0.430	×	0.430	0.650	×	0.650	0.020	0.025	0.025	0.070	B	0	0	IR - 5194-MO	

NTK CLCC (Ceramic – Leadless Chip Carrier)

UNIT: inch

LEAD COUNT	PKG TYPE	CAVITY						OVERALL			LAYER THICKNESS				NTK MATERIAL CODE B:Black W:White	CONNECTION (0:NON-Connect)		DRAWING NO.	
		DIE CAV.			TOP CAV.						1st	2nd	3rd	TOTAL		SEAL RING	DIE ATTACH		
		A	X	B	C	X	D	E	X	F									
44	CLOC	0.474	x	0.474	0.562	x	0.562	0.650	x	0.650	0.035	0.040	0.025	0.100	B	0	-	IR - 5489C-MO	
44	CLOC	0.475	x	0.430	0.550	x	0.500	0.650	x	0.650	0.020	0.020	0.030	0.070	B	0	No.22	IR - 5397C-MO	
44	CLOC	0.495	x	0.400	0.550	x	0.500	0.650	x	0.650	0.020	0.020	0.025	0.065	B	0	No34, A	IR - 5511-MO	
48	CLOC	0.157	x	0.157	0.236	x	0.236	0.354	x	0.354	0.012	0.014	0.012	0.037	B	0	0	IR - 8578A	
48	CLOC	0.327	x	0.327	0.382	x	0.382	0.500	x	0.500	0.025	0.025	0.020	0.070	B	0	0	IR - 5498B	
48	CLOC	0.350	x	0.350	0.430	x	0.430	0.560	x	0.560	0.033	0.015	0.015	0.063	B	No.6	0	IR - 5508A	
48	CLOC	0.350	x	0.350	0.430	x	0.430	0.560	x	0.560	0.020	0.020	0.020	0.060	B	0	0	IR - 3013C	
48	CLOC	0.400	x	0.400	0.460	x	0.460	0.560	x	0.560	0.032	0.020	0.020	0.072	B	-	-	IR - 3012A-MO	
48	CLOC	0.410	x	0.410	0.457	x	0.457	0.560	x	0.560	0.020	0.020	0.016	0.056	B	0	0	IR - 3007B-C	
52	CLOC	0.600	x	0.600	0.680	x	0.680	0.750	x	0.750	0.020	0.040	0.025	0.085	B	0	0	IR - 5524B	
68	CLOC	0.300	x	0.300	0.420	x	0.420	0.560	x	0.560	0.020	0.025	0.020	0.065	B	0	0	IR - 6967A-MO	
68	CLOC	0.350	x	0.350	0.420	x	0.420	0.560	x	0.560	0.020	0.025	0.020	0.065	B	0	0	IR - 6164A-MO	
68	CLOC	0.400	x	0.350	0.455	x	0.405	0.560	x	0.560	0.020	0.020	0.020	0.060	B	0	0	IR - 5671B	
68	CLOC	0.330	x	0.330	0.490	x	0.490	0.950	x	0.950	0.020	0.025	0.040	0.085	B	0	0	IR - 5783A-MO	
68	CLOC	0.400	x	0.400	0.560	x	0.560	0.950	x	0.950	0.025	0.025	0.030	0.080	B	0	0	IR - 311E	
68	CLOC	0.435	x	0.435	0.535	x	0.535	0.955	x	0.955	0.020	0.025	0.025	0.070	B	-	-	IR - 5665A-MO	
68	CLOC	0.550	x	0.550	0.650	x	0.650	0.953	x	0.953	0.052	0.025	0.050	0.127	B	-	-	IR - 6112A	

NTK CLCC (Ceramic - Leadless Chip Carrier)



UNIT: mm

LEAD COUNT	PKG TYPE	CAVITY						OVERALL			LAYER THICKNESS				NTK MATERIAL CODE B:Black W:White	CONNECTION (0:NON-Connect)		DRAWING NO.
		DIE CAV.			TOP CAV.						1st	2nd	3rd	TOTAL		SEAL RING	DIE ATTACH	
		A	X	B	C	X	D	E	X	F								
3	CLCC		X			X		2.667	X	2.032	0.508			0.508	B	-	-	IR - 6010A-MO
3	CLCC	1.778	X	1.270				3.050	X	2.540	0.508	0.508		1.016	B	D	SEE DRAWING	IR - 7816B-MO
3	CLCC	3.302	X	2.794		X		5.080	X	4.572	0.508	0.254		0.762	B	-	No.2	IR - 6409A-MO
4	CLCC		X			X		2.794	X	2.413	0.508			0.508	B	-	-	IR - 5960A-MO
4	CLCC	2.400	X	1.700				3.200	X	2.500	0.500	0.150		0.650	B	2, C	SEE DRAWING	IR - 8616A
4	CLCC	3.556	X	2.286		X		5.588	X	3.810	1.016	0.381		1.397	B	0	-	IR - 5933A
4	CLCC							6.100	X	4.570	0.508			0.508	B	-	SEE DRAWING	IR - 6190A-MO
4	CLCC	4.699	X	3.048		X		6.223	X	4.572	0.432	0.254		0.686	B	-	No.1	IR - 6362AA-MO
6	CLCC	2.540	X	2.286	4.445	X	2.540	6.223	X	4.318	0.762	0.254	0.508	1.524	B	0	No.3	IR - 5052D
6	CLCC	4.450	X	2.540				6.223	X	4.318	1.016	0.381		1.397	B	0	SEE DRAWING	IR - 5254D-MO
8	CLCC	4.450	X	2.540				6.223	X	4.318	1.000	0.500		1.500	B	0	SEE DRAWING	IR - 8573A-MO
12	CLCC	5.499	X	5.301	8.700	X	5.499	10.701	X	7.501	0.500	0.500	1.001	2.002	B	-	No.2	IR - 8423A-MO



NTK CLCC (Ceramic – Leadless Chip Carrier)

UNIT: mm

LEAD COUNT	PKG TYPE	CAVITY						OVERALL			LAYER THICKNESS				NTK MATERIAL CODE B:Black W:White	CONNECTION (0:NON-Connect)		DRAWING NO.
		DIE CAV.			TOP CAV.						1st	2nd	3rd	TOTAL		SEAL RING	DIE ATTACH	
		A	X	B	C	X	D	E	X	F								
16	CLCC	3.048	×	3.048	4.064	×	4.064	6.350	×	6.350	0.508	0.508	0.381	1.397	B	0	0	IR - 5063F
16	CLCC	3.302	×	3.302	4.572	×	4.572	6.350	×	6.350	0.635	1.016	1.016	2.667	B	No.8	0	IR - 6216A-MO
18	CLCC	5.334	×	3.683	7.112	×	5.461	8.890	×	7.239	1.016	0.508	0.508	2.032	B	See DWG	No.1,2,15,16,17,18	IR - 5974A-MO
18	CLCC	5.334	×	3.683	7.112	×	5.461	8.890	×	7.239	1.016	0.508	0.508	2.032	B	0	0	IR - 5999A-MO
18	CLCC	6.071	×	4.420	7.137	×	5.486	8.890	×	7.239	0.381	0.508	0.381	1.270	B	0	No.18	IR - 5045B
18	CLCC	6.096	×	4.445	7.112	×	5.461	8.890	×	7.239	0.508	0.635	0.508	1.651	B	0	0	IR - 5051DA
18	CLCC	6.101	×	4.450	7.109	×	5.461	8.890	×	7.239	0.381	0.381	0.381	1.143	B	0	0	IR - 6500D-MO
20	CLCC	4.064	×	4.064	6.096	×	6.096	8.890	×	8.890	0.508	0.508	0.508	1.524	B	0	0	IR - 5517BA
20	CLCC	5.334	×	5.334	6.706	×	6.706	8.890	×	8.890	0.508	0.508	0.508	1.524	B	0	0	IR - 5705A
20	CLCC	5.334	×	5.334	7.010	×	7.010	8.890	×	8.890	0.762	0.635	0.508	1.905	B	0	0	IR - 5856B-MO
20	CLCC	6.096	×	6.096	7.112	×	7.112	8.890	×	8.890	1.016	0.762	0.635	2.413	B	0	-	IR - 6107A-MO
20	CLCC	6.096	×	6.096	7.112	×	7.112	8.890	×	8.890	1.016	0.762	0.635	2.413	B	PAD A,B	PAD A,B	IR - 5259D
24	CLCC		×			×		8.500	×	8.500	0.729			0.729	B	-	-	IR - 4161A-MO
24	CLCC	4.700	×	4.700	6.220	×	6.220	8.510	×	8.510	0.381	0.762	0.381	1.524	B	0	0	IR - 8084A-MO
28	CLCC	4.699	×	4.699	7.366	×	7.366	11.430	×	11.430	0.508	0.508	0.635	1.651	B	-	No.14	IR - 5778A-MO
28	CLCC	6.350	×	6.350	8.382	×	8.382	11.430	×	11.430	0.508	0.635	0.508	1.651	B	0	0	IR - 5583AA
28	CLCC	7.112	×	7.112	8.382	×	8.382	11.430	×	11.430	0.508	0.508	0.508	1.524	B	0	GND/No.14	IR - 338AA
28	CLCC	7.366	×	7.366	9.296	×	9.296	11.430	×	11.430	0.508	0.508	0.508	1.524	B	0	SEE DRAWING	IR - 5939C-MO
28	CLCC	7.620	×	7.620	9.042	×	9.042	11.430	×	11.430	0.254	0.762	0.508	1.524	B	0	0	IR - 220DA
28	CLCC	7.874	×	7.874	9.296	×	9.296	11.430	×	11.430	0.508	0.508	0.508	1.524	B	0	0	IR - 247AAW
28	CLCC	7.874	×	7.874	9.296	×	9.296	11.430	×	11.430	0.508	0.635	0.508	1.651	B	0	0	IR - 5451D
28	CLCC	7.620	×	7.620	8.890	×	8.890	11.430	×	11.430	0.508	0.508	0.508	1.524	B	0	No.2,8,12,14,16,22,26,27	IR - 3014D
28	CLCC	9.144	×	9.144		×		11.430	×	11.430	1.143	0.635		1.778	B	0	0	IR - 5929A-MO
28	CLCC	12.950	×	6.990	14.480	×	8.380	18.290	×	10.160	0.508	0.635	0.889	2.032	B	0	GND PAD	IR - 5624C-MO



NTK CLCC (Ceramic – Leadless Chip Carrier)

UNIT: mm

LEAD COUNT	PKG TYPE	CAVITY						OVERALL			LAYER THICKNESS				NTK MATERIAL CODE B:Black W:White	CONNECTION (0:NON-Connect)		DRAWING NO.
		DIE CAV.			TOP CAV.						1st	2nd	3rd	TOTAL		SEAL RING	DIE ATTACH	
		A	X	B	C	X	D	E	X	F								
32	CLCC	5.283	×	4.166	11.176	×	8.890	13.970	×	11.430	0.508	0.508	0.762	1.778	B	0	DA PAD	IR - 6385C-MO
32	CLCC	6.350	×	6.350	10.922	×	8.382	13.970	×	11.430	0.508	0.762	0.508	1.778	B	0	-	IR - 5654A-MO
32	CLCC	6.604	×	5.842	9.144	×	8.382	13.970	×	11.430	0.381	0.508	0.508	1.397	B	0	0	IR - 5402AA
32	CLCC	7.112	×	4.572	9.906	×	7.620	13.970	×	11.430	0.508	0.762	0.508	1.778	B	0	0	IR - 6077A
32	CLCC	7.112	×	6.350	9.144	×	8.382	13.970	×	11.430	0.508	0.635	0.508	1.651	B	0	0	IR - 5116D
32	CLCC	7.112	×	6.350	9.906	×	8.382	13.970	×	11.430	0.508	0.508	0.508	1.524	B	0	PAD A,B,C,D	IR - 5299B
32	CLCC	8.890	×	6.350	10.922	×	8.382	13.970	×	11.430	0.508	0.762	0.508	1.778	B	0	0	IR - 5646B
32	CLCC	8.890	×	7.620	11.430	×	8.890	13.919	×	11.379	0.508	0.508	0.635	1.651	B	-	No.16	IR - 5858A-MO
32	CLCC	9.144	×	7.112	11.176	×	9.144	13.970	×	11.430	0.508	0.635	0.635	1.778	B	0	0	IR - 285F
32	CLCC	9.906	×	7.366	11.430	×	8.890	13.970	×	11.430	0.635	0.508	0.508	1.651	B	0	0	IR - 5251E
32	CLCC	9.906	×	7.366	11.430	×	8.890	13.970	×	11.430	0.508	0.762	0.508	1.778	B	0	PAD A,B	IR - 5535A-MO
32	CLCC	10.414	×	7.874	11.811	×	9.271	13.970	×	11.430	0.508	0.762	0.508	1.778	B	0	0	IR - 5411BA
32	CLCC	10.668	×	7.620	11.938	×	9.144	13.919	×	11.379	0.381	0.635	0.762	1.778	B	0	No.16	IR - 5753B-MO
32	CLCC	10.922	×	8.128	11.938	×	9.271	13.970	×	11.430	0.381	0.381	1.016	1.778	B	0	DA PAD	IR - 6461A-MO
32	CLCC	11.176	×	7.874	12.192	×	9.144	13.970	×	11.430	0.508	0.508	1.016	2.032	B	0	PAD A, B	IR - 5379C
32	CLCC	17.272	×	7.366	18.542	×	8.636	21.057	×	10.160	0.508	0.508	1.016	2.032	B	0	No.16	IR - 5997A-MO
36	CLCC	7.366	×	7.366	8.636	×	8.636	10.668	×	10.668	0.620	0.508	0.406	1.534	B	0	0	IR - 8145A-MO
36	CLCC	7.371	×	7.371	8.641	×	8.641	10.668	×	10.668	0.620	0.508	0.406	1.534	B	-	-	IR - 6608A-MO
36	CLCC	12.624	×	8.382	21.082	×	9.525	23.368	×	11.557	0.508	0.508	1.016	2.032	B	0	No.10, 28	IR - 6387A-MO
40	CLCC	6.350	×	6.350	7.620	×	7.620	10.160	×	10.160	0.381	0.508	0.381	1.270	B	0	0	IR - 5338B
40	CLCC	7.620	×	7.620	9.650	×	9.650	12.190	×	12.190	0.508	0.508	0.508	1.524	B	0	0	IR - 5913C-MO
44	CLCC	6.350	×	6.350	9.906	×	9.906	16.510	×	16.510	0.508	0.508	0.508	1.524	B	0	0	IR - 288D
44	CLCC	8.636	×	8.636	10.922	×	10.922	16.510	×	16.510	0.508	0.762	0.635	1.905	B	0	0	IR - 5969A
44	CLCC	8.636	×	8.636	10.922	×	10.922	16.510	×	16.510	0.508	0.635	0.635	1.778	B	0	0	IR - 5194-MO

NTK CLCC (Ceramic – Leadless Chip Carrier)

UNIT: mm

LEAD COUNT	PKG TYPE	CAVITY						OVERALL			LAYER THICKNESS				NTK MATERIAL CODE B:Black W:White	CONNECTION (0:NON-Connect)		DRAWING NO.
		DIE CAV.			TOP CAV.						1st	2nd	3rd	TOTAL		SEAL RING	DIE ATTACH	
		A	X	B	C	X	D	E	X	F								
44	CLCC	12.040	×	12.040	14.275	×	14.275	16.510	×	16.510	0.889	1.016	0.635	2.540	B	0	-	IR - 5489C-MO
44	CLCC	12.065	×	10.922	13.970	×	12.700	16.510	×	16.510	0.508	0.508	0.762	1.778	B	0	No.22	IR - 5397C-MO
44	CLCC	12.570	×	10.160	13.970	×	12.700	16.510	×	16.510	0.508	0.508	0.635	1.651	B	0	No.34, A	IR - 5511-MO
48	CLCC	4.000	×	4.000	6.000	×	6.000	9.000	×	9.000	0.300	0.350	0.300	0.950	B	0	0	IR - 8578A
48	CLCC	8.306	×	8.306	9.703	×	9.703	12.700	×	12.700	0.635	0.635	0.508	1.778	B	0	0	IR - 5498B
48	CLCC	8.890	×	8.890	10.922	×	10.922	14.220	×	14.220	0.838	0.381	0.381	1.600	B	No.6	0	IR - 5508A
48	CLCC	8.890	×	8.890	10.922	×	10.922	14.220	×	14.220	0.508	0.508	0.508	1.524	B	0	0	IR - 3013C
48	CLCC	10.160	×	10.160	11.684	×	11.684	14.220	×	14.220	0.810	0.508	0.508	1.826	B	-	-	IR - 3012A-MO
48	CLCC	10.414	×	10.414	11.608	×	11.608	14.220	×	14.220	0.508	0.508	0.406	1.422	B	0	0	IR - 3007B-C
52	CLCC	15.240	×	15.240	17.272	×	17.272	19.050	×	19.050	0.508	1.016	0.635	2.159	B	0	0	IR - 5524B
68	CLCC	7.620	×	7.620	10.668	×	10.668	14.220	×	14.220	0.508	0.635	0.508	1.651	B	0	0	IR - 6967A-MO
68	CLCC	8.890	×	8.890	10.670	×	10.670	14.220	×	14.220	0.508	0.635	0.508	1.651	B	0	0	IR - 6164A-MO
68	CLCC	10.160	×	8.890	11.557	×	10.287	14.220	×	14.220	0.508	0.508	0.508	1.524	B	0	0	IR - 5671B
68	CLCC	8.382	×	8.382	12.446	×	12.446	24.130	×	24.130	0.508	0.635	1.016	2.159	B	0	0	IR - 5783A-MO
68	CLCC	10.160	×	10.160	14.224	×	14.224	24.130	×	24.130	0.635	0.635	0.762	2.032	B	0	0	IR - 311E
68	CLCC	11.049	×	11.049	13.589	×	13.589	24.257	×	24.257	0.508	0.635	0.635	1.778	B	-	-	IR - 5665A-MO
68	CLCC	13.970	×	13.970	16.510	×	16.510	24.206	×	24.206	1.321	0.635	1.270	3.226	B	-	-	IR - 6112A